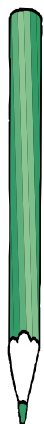
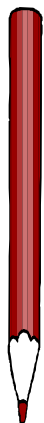
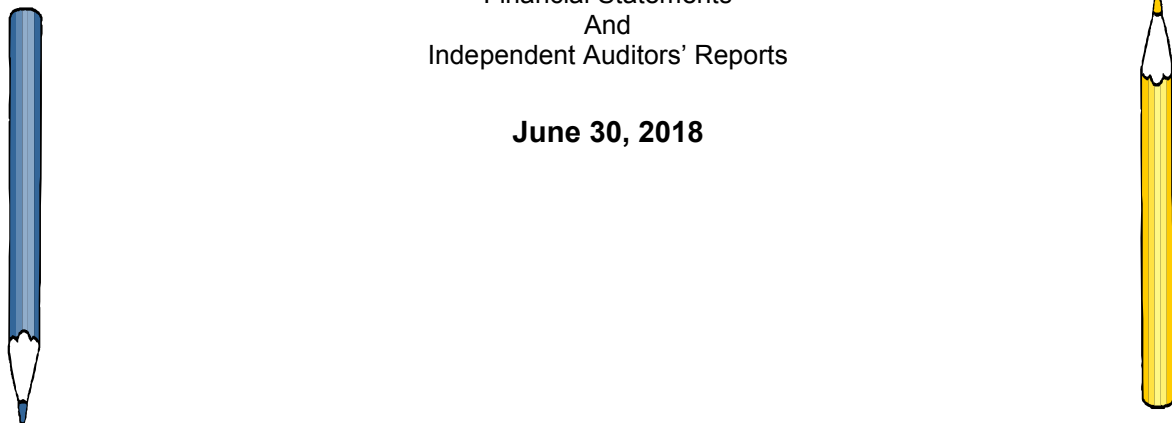


Resilience Charter School, Inc.

A Component Unit of the Alachua County District School Board

Financial Statements
And
Independent Auditors' Reports

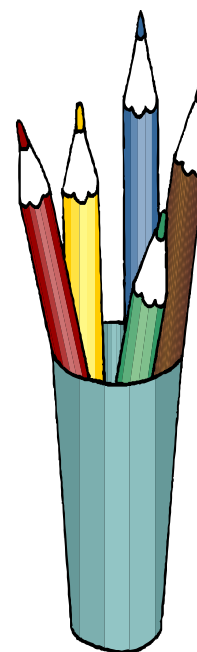
June 30, 2018



KATTELL AND COMPANY, P.L.
Certified Public Accountants Serving the Nonprofit Community

**808-B NW 16th Avenue
Gainesville, Florida 32601**

(352) 395-6565



Financial Statements and Independent Auditors' Reports

June 30, 2018

Resilience Charter School, Inc.

A Component Unit of the Alachua County District School Board

Contents

INDEPENDENT AUDITORS' REPORT	1
REQUIRED SUPPLEMENTARY INFORMATION:	
Management's Discussion and Analysis (MD&A)	2
SPECIAL PURPOSE FINANCIAL STATEMENTS:	
Government-wide Financial Statements:	
Statement of Net Position	5
Statement of Activities	6
Governmental Fund Financial Statements:	
Balance Sheet	7
Reconciliation of the Balance Sheet to the Statement of Net Position	8
Statement of Revenues, Expenditures and Changes in Fund Balances	9
Reconciliation of the Statement of Revenues, Expenditures and Changes in Fund Balances to the Statement of Activities	10
Notes to the Financial Statements	11
REQUIRED SUPPLEMENTARY INFORMATION:	
Budgetary Comparison Schedule – General Fund	17
ADDITIONAL ELEMENTS:	
Communication with Those Charged with Governance	18
Management Letter	19
Independent Auditors' Report on Internal Control Over Financial Reporting and on Compliance and Other Matters Required by <i>Government Auditing Standards</i>	20
Schedule of Findings.....	21
School's Response	22

Kattell and Company, P.L.

Certified Public Accountants Serving the Nonprofit Community

808-B NW 16th Avenue Gainesville, Florida 32601 TEL: 352-395-6565 FAX: 352-395-6636 www.kattell.com

INDEPENDENT AUDITORS' REPORT

To the Board of Directors
Resilience Charter School, Inc.

September 18, 2018

Report on Financial Statements

We have audited the accompanying financial statements of the governmental activities and each major fund of the Resilience Charter School, Inc. (the School), a component unit of the Alachua County District School Board, as of and for the year ended June 30, 2018, and the related notes to the financial statements, which collectively comprise the School's basic financial statements as listed in the table of contents.

Management's Responsibility for the Financial Statements. Management is responsible for the preparation and fair presentation of these financial statements in accordance with the accounting principles generally accepted in the United States of America; this includes the design, implementation, and maintenance of internal control relevant to the preparation and fair presentation of financial statements that are free from material misstatement, whether due to fraud or error.

Auditors' Responsibility. Our responsibility is to express opinions on these financial statements based on our audit. We conducted our audit in accordance with auditing standards generally accepted in the United States of America and the standards applicable to financial audits contained in *Government Auditing Standards*, issued by the Comptroller General of the United States. Those standards required that we plan and perform the audit to obtain reasonable assurance about whether the financial statements are free from material misstatement.

An audit involves performing procedures to obtain audit evidence about the amounts and disclosures in the financial statements. The procedures selected depend on the auditor's judgment, including the assessment of the risks of material misstatement of the financial statements, whether due to fraud or error. In making those risk assessments, the auditor considers internal control relevant to the entity's preparation and fair presentation of the financial statements in order to design audit procedures that are appropriate in the circumstances, but not for the purpose of expressing an opinion on the effectiveness of the entity's internal control. Accordingly, we express no such opinion. An audit also includes evaluating the appropriateness of accounting policies used and the reasonableness of significant accounting estimates made by management, as well as evaluating the overall presentation of the financial statements.

We believe that the audit evidence we have obtained is sufficient and appropriate to provide a basis for our audit opinions.

Opinions. In our opinion, the financial statements referred to above present fairly, in all material respects, the respective financial position of the governmental activities and each major fund of the School as of June 30, 2018, and the respective changes in financial position thereof for the year then ended in accordance with accounting principles generally accepted in the United States of America.

Other Matters - Required Supplementary Information. Accounting principles generally accepted in the United States of America require that management's discussion and analysis and the budgetary comparison schedule, as listed in the table of contents, be presented to supplement the basic financial statements. Such information, although not a part of the basic financial statements, is required by the Governmental Accounting Standards Board who considers it to be an essential part of financial reporting for placing the basic financial statements in an appropriate operational, economic, or historical context. We have applied certain limited procedures to the required supplementary information in accordance with auditing standards generally accepted in the United States of America, which consisted of inquiries of management about the methods of preparing the information and comparing the information for consistency with management's responses to our inquiries, the basic financial statements, and other knowledge we obtained during our audit of the basic financial statements. We do not express an opinion or provide any assurance on the information because the limited procedures do not provide us with sufficient evidence to express an opinion or provide any assurance.

Other Reporting Required by *Government Auditing Standards*

In accordance with *Government Auditing Standards*, we have also issued our report dated September 18, 2018, on our consideration of the School's internal control over financial reporting (internal control) and on our tests of its compliance with certain provisions of laws, regulations, contracts, and grant agreements and other matters. The purpose of that report is to describe the scope of our testing of internal control and compliance and the results of that testing, and not to provide an opinion on internal control or on compliance. That report is an integral part of an audit performed in accordance with *Government Auditing Standards* in considering the School's internal control and compliance.

Kattell and Company, P.L.

Gainesville, Florida

Management's Discussion and Analysis

June 30, 2018

Resilience Charter School, Inc.

A Component Unit of the Alachua County District School Board

This discussion and analysis of the School's financial performance provides an overview of the School's financial activities for the fiscal year ended June 30, 2018. Please read it in conjunction with the School's financial statements, which follow this section.

The following are various financial highlights for fiscal year 2018:

- The School's overall net position increased by approximately \$64,000.
- Total ending unrestricted net position was \$33,766.
- The School had total expenses for the year of about \$779,000 compared to revenues of approximately \$843,000.
- The School educated 83 and 70 students in the years ending June 30, 2018 and 2017, serving grades six through eleven.

OVERVIEW OF THE BASIC FINANCIAL STATEMENTS

This annual report contains government-wide financial statements that report on the School's activities as a whole and fund financial statements that report on the School's individual funds.

Government-wide Financial Statements

The first financial statement is the Statement of Net Position. This statement includes all of the School's assets and liabilities using the accrual basis of accounting. Accrual accounting is similar to the accounting used by most private-sector companies. All of the current year revenues and expenses are recorded, regardless of when cash is received or paid. Net position – the difference between assets and liabilities – can be used to measure the School's financial position.

The second financial statement is the Statement of Activities. This statement is also shown using the accrual basis of accounting. It shows the increases and decreases in net position during the fiscal year. Over time, the increases or decreases in net position are useful indicators of whether the School's financial health is improving or deteriorating. However, other non-financial factors, such as enrollment levels or changes in state funding, must also be considered when assessing the overall health of the School.

In these statements, all of the School's activities are considered to be governmental activities. The School has no business-type activities, which are generally financed in whole or in part by fees charged to external parties for goods or services.

Fund Financial Statements

Following the government-wide financial statements are the fund financial statements. They provide more detailed information about the School's funds.

The School maintains one individual governmental fund, the General Fund.

Governmental funds are accounted for using modified accrual accounting. Modified accrual accounting focuses on available cash and other financial assets that can readily be converted to cash. This provides a shorter-term view of the fund's financial position. A reconciliation is provided with these statements, which helps to explain the differences between the fund financial statements and the government-wide financial statements.

Management's Discussion and Analysis

June 30, 2018

Resilience Charter School, Inc.

A Component Unit of the Alachua County District School Board

CONDENSED FINANCIAL INFORMATION

The following table presents condensed, government-wide current year and prior year data about net position and changes in net position.

	2018 Governmental Activities	2017 Governmental Activities
Net Position		
Assets:		
Non-capital Assets	\$ 56,330	\$ 38,413
Capital Assets, Net	21,922	--
Total Assets	78,252	38,413
Liabilities:		
Current Liabilities	22,564	46,399
Total Liabilities	22,564	46,399
Net position:		
Net Investment in Capital Assets	21,922	--
Unrestricted	33,766	(7,986)
Total Net position	\$ 55,688	\$ (7,986)
Change in Net Position		
Program Revenues:		
Charges for Services	\$ 21,007	\$ 17,239
CSP Implementation Grant	312,022	192,370
General Revenues:		
Title II Grant	2,960	--
Florida Education Finance Program	482,009	400,555
Other State Revenues	10,636	7,877
Unrestricted Grants & Contributions	14,497	6,686
Total Revenues	843,131	624,727
Program Expenses:		
Instruction	433,026	282,963
Instructional Support Services	54,388	28,243
General Support	159,748	170,078
Community Services	8,971	5,272
Operation of Plant	123,324	117,920
Total Expenses	779,457	604,476
Change in Net Position	63,674	20,251
Beginning Net Position	(7,986)	(28,237)
Ending Net Position	\$ 55,688	\$ (7,986)

Management's Discussion and Analysis

June 30, 2018

Resilience Charter School, Inc.

A Component Unit of the Alachua County District School Board

OVERALL FINANCIAL POSITION AND RESULTS OF OPERATIONS

Governmental Activities. The governmental activities generated \$333,029 in program revenues and \$510,102 of general revenues, and incurred \$779,457 of program expenses. This resulted in a \$63,674 increase in net position.

THE SCHOOL'S INDIVIDUAL FUNDS

General Fund. The fund balance of the General Fund increased by \$32,497, from \$19,994 to \$52,491.

BUDGETARY HIGHLIGHTS

General Fund. The original budget did not include the budget for the CSP Grant. There were no differences between the final budget and actual amounts.

CAPITAL ASSETS AND DEBT ADMINISTRATION

Capital Assets. The School acquired some equipment. Please refer the paragraph entitled *Capital Assets and Depreciation* in the notes to the accompanying financial statements for more detailed information about the School's capital asset policy.

Debt Administration. The School held no long-term debt at the beginning of the year, and issued no new debt during the year. Please refer to the paragraph entitled *Long-Term Liabilities* in the notes to the accompanying financial statements for more detailed information about the School's long-term debt policy.

ECONOMIC FACTORS

The School currently is not aware of any conditions that are expected to have a significant effect on the School's financial position or results of operations.

CONTACTING THE SCHOOL'S FINANCIAL MANAGEMENT

This financial report is designed to provide a general overview of the School's finances and to show the School's accountability for the money it receives. If you have any questions about this report or need additional financial information, contact Jenny Hill, Director, Resilience Charter School, Inc., 1717 NE 9th Street, Gainesville, FL 32609.

Statement of Net Position
June 30, 2018
Resilience Charter School, Inc.
A Component Unit of the Alachua County District School Board

Assets	Governmental Activities
Cash	\$ 24,166
Receivables	1,645
Prepaid Expenses	22,359
Deposits	8,160
Depreciable Capital Assets, Net	21,922
 Total Assets	 78,252
Liabilities	
Accounts Payable	3,839
Lease Payable	18,725
 Total Liabilities	 22,564
Net Position	
Net Investment in Capital Assets	21,922
Unrestricted	33,766
 Total Net Position	 \$ 55,688

See accompanying notes.

Statement of Activities
For the Year Ended June 30, 2018
Resilience Charter School, Inc.
A Component Unit of the Alachua County District School Board

	Program Revenues				Net (Expense) Revenue and Change in Net Position
	Expenses	Charges for Services	Operating Grants and Contributions	Capital Grants and Contributions	
Functions/Programs:					
Governmental Activities:					
Instruction	\$ (433,026)	\$ 1,900	\$ 227,875	\$ --	\$ (203,251)
Instructional Support Services	(54,388)	--	49,712	--	(4,676)
General Support	(159,748)	3,779	34,435	--	(121,534)
Community Services	(8,971)	15,328	--	--	6,357
Operation of Plant	(123,324)	--	--	--	(123,324)
Total	<u>\$ (779,457)</u>	<u>\$ 21,007</u>	<u>\$ 312,022</u>	<u>\$ --</u>	<u>(446,428)</u>

Federal through State:

Title II Grant 2,960

General Revenues:

State Revenue:

Florida Education Finance Program 482,009

Other State Revenues 10,636

Unrestricted Grants and Contributions 14,497

Total General Revenues 510,102

Change in Net Position 63,674

Net Position – Beginning of Year (7,986)

Net Position – End of Year \$ 55,688

See accompanying notes.

Balance Sheet – Governmental Funds
June 30, 2018
Resilience Charter School, Inc.
A Component Unit of the Alachua County District School Board

	General Fund
ASSETS	
Cash	\$ 24,166
Receivables	1,645
Prepaid Expenses	22,359
Deposits	8,160
Total Assets	\$ 56,330
LIABILITIES AND FUND BALANCES	
Liabilities:	
Accounts Payable	\$ 3,839
Total Liabilities	3,839
Fund Balances:	
Non-spendable - Prepaids	22,359
Non-spendable - Deposits	8,160
Unassigned	21,972
Total Fund Balances	52,491
Total Liabilities and Fund Balances	\$ 56,330

See accompanying notes.

**Reconciliation of the Balance Sheet to the Statement of Net Position –
Governmental Funds**

June 30, 2018

Resilience Charter School, Inc.

A Component Unit of the Alachua County District School Board

Fund Balances – Total Governmental Funds \$ 52,491

Amounts reported for governmental activities in the Statement of Net Position are different because:

Capital assets used in governmental activities are not reported in the governmental funds.

Capital Assets – Net of Accumulated Depreciation 21,922

Lease expenses are reported on a straight line basis in the government-wide financial statements, resulting in a payable, but lease expenditures are reported as they are due and payable in the governmental funds statements.

Lease Payable (18,725)

Net Position of Governmental Activities \$ 55,688

See accompanying notes.

**Statement of Revenues, Expenditures and Changes in Fund Balances -
Governmental Funds
For the Year Ended June 30, 2018
Resilience Charter School, Inc.
A Component Unit of the Alachua County District School Board**

	General Fund
Revenues	
Federal through State:	
CSP Implementation Grant	\$ 312,022
Title II	2,960
State Revenue:	
Florida Education Finance Program	482,009
Other State Revenues	10,636
Local Revenue:	
After School Revenue	15,328
Other Local Revenues	20,176
Total Revenues	843,131
Expenditures and Changes in Fund Balances	
Expenditures:	
Current:	
Instruction	445,403
Instructional Support Services	54,388
General Support	178,548
Community Services	8,971
Operation of Plant	123,324
Total Expenditures	810,634
Excess of Revenues Over/(Under) Expenditures	32,497
Fund Balances, July 1, 2017	19,994
Fund Balances, June 30, 2018	\$ 52,491

See accompanying notes.

**Reconciliation of the Statement of Revenues, Expenditures and Changes in
Fund Balances to the Statement of Activities - Governmental Funds
For the Year Ended June 30, 2018
Resilience Charter School, Inc.
*A Component Unit of the Alachua County District School Board***

Excess of Revenues over Expenditures – Total Governmental Funds \$ 32,497

Amounts reported for governmental activities in the Statement of Activities are different because:

Governmental funds report capital outlays as expenditures. However, in the statement of activities, the cost of those assets is depreciated over their estimated useful lives.

Current Year Expenditures for Capital Assets	23,089
Current Year Depreciation Expense	(1,167)

The School entered into a long-term lease which provides first-year rent abatement inducements and annual rental increases. Lease expenses are reported on a full accrual, straight line basis in the government-wide financial statements, which will result in a lease payable on the Statement of Net Position until the end of the lease. Lease expenditures are reported on a modified accrual basis, as they are due and payable, in the governmental funds statements, so there is no lease payable on the Balance Sheet.

Decrease in Lease Payable	9,255
---------------------------	-------

Change in Net Position of Governmental Activities	\$ 63,674
--	-----------

See accompanying notes.

Notes to the Financial Statements

June 30, 2018

Resilience Charter School, Inc.

A Component Unit of the Alachua County District School Board

NOTE 1 – REPORTING ENTITY

Resilience Charter School, Inc. (the Corporation) is a not-for-profit corporation organized pursuant to Chapter 617, Florida Statutes, the Florida Not-For-Profit Corporation Act, and Section 1002.33, Florida Statutes. The not-for-profit corporation conducts business as Resilience Charter School (the School). The governing body of the School is the not-for-profit corporation's Board of Directors. The Corporation is considered a component unit of the Alachua County District School Board (the District).

The general operating authority of the School is contained in Section 1002.33, Florida Statutes. The School operates under a charter of the sponsoring school district. The current charter is effective until June 30, 2021, and may be renewed provided that a program review demonstrates that certain criteria addressed in Section 1002.33(7), Florida Statutes, have been successfully accomplished. At the end of the term of the charter, the District may choose not to renew the charter under grounds specified in the charter, in which case the District is required to notify the School in writing at least 90 days prior to the charter's expiration. Pursuant to Section 1002.33(8)(e), Florida Statutes, the charter school contract provides that in the event the School is dissolved or terminated, any unencumbered funds and all School property purchased with public funds automatically revert to the District. During the term of the charter, the District may also terminate the charter if good cause is shown. The School is considered a component unit of the District.

Criteria for determining if other entities are potential component units of the School which should be reported with the School's basic financial statements are identified and described in the Governmental Accounting Standards Board's (GASB) *Codification of Governmental Accounting and Financial Reporting Standards*, Sections 2100 and 2600. The application of these criteria provide for identification of any entities for which the School is financially accountable and other organizations for which the nature and significance of their relationship with the School are such that exclusion would cause the School's basic financial statements to be misleading or incomplete. Based on these criteria, no component units are included within the reporting entity of the School.

NOTE 2 – SUMMARY OF SIGNIFICANT ACCOUNTING POLICIES

The accounting policies of the School conform to generally accepted accounting principles as applicable to governments. The more significant accounting policies are described below to enhance the usefulness of the financial statements to the reader.

Government-wide Financial Statements

The government-wide financial statements (the Statement of Net Position and the Statement of Activities) report information on all of the activities of the School. Governmental activities are reported separately from business-type activities, which rely on fees charged to external parties as their primary revenues. The School has no business-type activities.

Any internal inter-fund activity has been eliminated from the government-wide financial statements.

The Statement of Net Position reports the School's financial position as of the end of the fiscal year. In this statement, the School's net position is reported in three categories: net investment in capital assets; restricted net position; and unrestricted net position.

Notes to the Financial Statements

June 30, 2018

Resilience Charter School, Inc.

A Component Unit of the Alachua County District School Board

NOTE 2 – SUMMARY OF SIGNIFICANT ACCOUNTING POLICIES (continued)

Government-wide Financial Statements (concluded)

The Statement of Activities is displayed using a net-cost format and reports the degree to which the direct expenses of a given function are offset by program revenues. Direct expenses are those that are clearly identifiable with a specific function. Program revenues include 1) charges for services that are directly related to a given function and 2) grants and contributions that are restricted to meeting the operational or capital requirements of a particular function. Other items not properly included among program revenues are reported instead as general revenues.

Fund Financial Statements

The financial transactions of the School are reported in individual funds in the fund financial statements. The governmental fund statements include reconciliations with brief explanations to better identify the relationship between the government-wide statements and the statements for the governmental funds.

The following governmental fund is used by the School:

General Fund – The General Fund is the general operating fund of the School. It is used to account for all financial resources, except those associated with grants that are restricted to specified uses.

The School has no non-major funds.

Measurement Focus and Basis of Accounting

The government-wide financial statements are reported using the economic resources measurement focus and the accrual basis of accounting. Revenues are recorded when earned and expenses are recorded when a liability is incurred, regardless of the timing of related cash flows.

Governmental fund financial statements are reported using the current financial resources measurement focus and the modified accrual basis of accounting. Revenues are recognized as soon as they are both measurable and available. Revenues are considered to be available when they are collectible within the current period or soon enough thereafter to pay liabilities of the current period. For this purpose, the School considers revenues to be available if they are collected within 60 days of the end of the current fiscal period. Expenditures generally are recorded when the related fund liability is incurred. However, debt service expenditures are recorded only when payment is due.

Most revenues are considered to be susceptible to accrual and have been measured in the current fiscal period. Certain other items are considered to be measurable and available only when cash is received.

Cash

Cash consists of deposits in financial institutions. At times, such deposits may be in excess of the Federal Deposit Insurance Corporation (FDIC) insurance limit. At June 30, 2018, there were no amounts exceeding FDIC insurance coverage. The School has no policy regarding deposit custodial credit risk.

Notes to the Financial Statements

June 30, 2018

Resilience Charter School, Inc.

A Component Unit of the Alachua County District School Board

NOTE 2 – SUMMARY OF SIGNIFICANT ACCOUNTING POLICIES (continued)

Prepays

Certain payments to vendors reflect costs applicable to future accounting periods and are recorded as prepaid items in both government-wide and fund financial statements. Prepaid assets are reported as “non-spendable” in the funds financial statements to indicate that prepaids do not represent available expendable resources.

Capital Assets and Depreciation

Capital assets are defined by the School as assets with an initial, individual cost of \$2,000 or more and an estimated useful life of more than one year. These assets are recorded at historical cost. Donated capital assets are recorded at estimated fair value on the date of donation. Land improvements are not depreciated. Depreciable capital assets are depreciated using the straight-line method over their estimated useful lives.

Revenue Sources

Revenues for current operations are received primarily from the District pursuant to the funding provisions included in the School’s charter. In accordance with the funding provisions of the charter and Florida Statutes, the School reports the number of full-time equivalent (FTE) students and related data to the District. Under the provisions of Florida Statutes the District reports the number of FTE students and related data to the Florida Department of Education (FDOE) for funding through the Florida Education Finance Program. Funding for the School is adjusted during the year to reflect the revised calculations by the FDOE under the Florida Educational Finance Program and the actual weighted FTE students reported by the School during the designated FTE student survey periods. The School also receives other financial assistance. This assistance is generally based on applications submitted to and approved by the granting agency.

Compensated Absences

The School does not pay for employees’ unused sick and vacation time at termination, and unused time does not accumulate. Therefore, no liability for compensated absences is recorded.

Net Position

Net position represents the difference between assets and liabilities and is reported in three categories as hereafter described. *Net investment in capital assets* represents capital assets, net of accumulated depreciation and any outstanding debt related to those assets. Net position is reported as *restricted* when there are legal limitations imposed on their use by legislation, or external restrictions imposed by other governments, creditors, or grantors. The balance of the net position is reported as *unrestricted*.

When both restricted and unrestricted resources are available for use, it is the School’s policy to use restricted resources first, and then unrestricted resources as they are needed.

Notes to the Financial Statements

June 30, 2018

Resilience Charter School, Inc.

A Component Unit of the Alachua County District School Board

NOTE 2 – SUMMARY OF SIGNIFICANT ACCOUNTING POLICIES (concluded)

Fund Balance Classifications

Governmental funds report separate classifications of fund balance.

Non-Spendable. The non-spendable fund balance classification includes amounts that cannot be spent because they are either (a) not in spendable form or (b) legally or contractually required to be maintained intact.

Restricted. The restricted fund balance is defined as having restrictions (a) externally imposed by creditors (such as through debt covenants), grantors, contributors, or laws or regulations of other governments, or (b) imposed by law through constitutional provisions or enabling legislation.

Committed. Committed fund balance is defined as amounts that can only be used for specific purposes pursuant to constraints imposed by formal action of the School's Board of Directors.

Assigned. Assigned fund balance is defined as amounts that are constrained by the intent of the School's Board of Directors to be used for specific purposes, but are neither restricted nor committed. The School has given the authority to assign fund balance to the School's Director. Assigned fund balance includes spendable fund balance amounts established by the Director that are intended to be used for specific purposes that are neither considered restricted or committed. Assignment of fund balance may be (a) made for a specific purpose that is narrower than the general purposes of the government itself; and/or (b) used to reflect the appropriation of a portion of existing unassigned fund balance to eliminate a projected deficit in the subsequent year's budget in an amount no greater than the projected excess of expected expenditures over expected revenues. Assigned fund balance shall reflect management's intended use of resources as set forth each year by the Director. Assigned fund balance may or may not be appropriated for expenditure in the subsequent year depending on the timing of the project/reserve for which it was assigned.

Unassigned. Unassigned fund balance is the residual classification for the general fund.

It is the policy of the School that they will use restricted resources to the extent which they are available, then committed resources, followed by assigned resources. Once these are consumed the School will then use unassigned resources. The School does not have a formal policy requiring a minimum fund balance.

Use of Estimates

The preparation of financial statements in conformity with generally accepted accounting principles requires management to make various estimates. Actual results could differ from those estimates.

Notes to the Financial Statements

June 30, 2018

Resilience Charter School, Inc.

A Component Unit of the Alachua County District School Board

NOTE 3 – CAPITAL ASSETS AND DEPRECIATION

Capital asset activity for the year ended June 30, 2018, was as follows:

	Balance July 1, 2017	Additions	Deletions	Balance June 30, 2018
Capital Assets Being Depreciated:				
Furniture, Fixtures & Equipment	\$ --	\$ 23,089	\$ --	\$ 23,089
Total Capital Assets	<u> --</u>	<u> 23,089</u>	<u> --</u>	<u> 23,089</u>
Accumulated Depreciation:				
Furniture, Fixtures & Equipment	--	1,167	--	1,167
Total Accumulated Depreciation	<u> --</u>	<u> 1,167</u>	<u> --</u>	<u> 1,167</u>
Net Capital Assets	<u>\$ --</u>	<u>\$ 21,922</u>	<u>\$ --</u>	<u>\$ 21,922</u>

Depreciation was charged to functions/programs as follows:

Instruction	\$ 551
General Support	<u> 616</u>
Total	<u>\$ 1,167</u>

NOTE 4 – OPERATING LEASE - FACILITIES

The School signed a 40 month lease agreement with 1000 NE 16th Avenue Partners, LLC to lease the School's premises for a total of \$258,950. The lease calls for monthly payments and runs through June 30, 2019. As an inducement to enter into the lease, the first four months were free, with scheduled rent increases up to \$8,332 per month.

In the government-wide financial statements the lease is recorded under the accrual basis of accounting. Rental expense is recognized on a straight-line basis over the lease term. Rental expense for the year ending June 30, 2018, was \$77,685.

In the governmental funds financial statements the lease is recorded under the modified accrual basis of accounting. Rent expenditures are recognized to the extent that the amounts are payable with expendable, available financial resources. Rent expenditures for the year ending June 30, 2018, were \$86,940. Future minimum lease payments are \$96,410 for the year ending June 30, 2019.

Lease payable is the cumulative difference between lease expense and lease expenditures as recognized prior to June 30, 2018.

NOTE 5 – RISK MANAGEMENT

The School is exposed to various risks of loss, including general liability, personal injury, workers compensation, and errors and omissions. These risks arise in the normal conduct of the business of the School. The School is not aware of any pending or threatened litigation, claims or assessments. To manage its risks, the School has purchased commercial insurance. Settled claims, if any, resulting from these risks have not exceeded commercial coverage in either of the past two years.

Notes to the Financial Statements

June 30, 2018

Resilience Charter School, Inc.

A Component Unit of the Alachua County District School Board

NOTE 6 – EMPLOYEE RETIREMENT PLAN

The School made contributions on behalf of its employees to a SIMPLE IRA Plan, managed by Edward Jones. The employer matches employee contributions up to three percent of each eligible employee's gross pay for the contract year. The Board of Directors has the authority to amend or terminate the plan, although it has not expressed an intention to do so.

<u>Year Ended June 30</u>	<u>Employee Contributions</u>	<u>Employer Contributions</u>
2017	\$ --	\$ --
2018	\$ 4,862	\$ 4,862

Budgetary Comparison Schedule – General Fund

For the Year Ended June 30, 2018

Resilience Charter School, Inc.

A Component Unit of the Alachua County District School Board

	BUDGETED AMOUNTS		Actual Amounts	Variance with Final Budget
	Original	Final		
Revenues				
Federal through State:				
CSP Implementation Grant	\$ --	\$ 312,022	\$ 312,022	\$ --
Title II Grant	--	2,960	2,960	--
State Revenue:				
Florida Education Finance Program	498,571	482,009	482,009	--
Other State Revenues	--	10,636	10,636	--
Local Revenue:				
After School Revenue	14,000	15,328	15,328	--
Other Local Revenues	8,500	20,176	20,176	--
Total Revenues	521,071	843,131	843,131	--
Expenditures and Changes in Fund Balances				
Expenditures:				
Current:				
Instruction	204,467	445,403	445,403	--
Instructional Support Services	5,000	54,388	54,388	--
General Support	139,205	178,548	178,548	--
Community Services	7,037	8,971	8,971	--
Operation of Plant	129,650	123,324	123,324	--
Total Expenditures	485,359	810,634	810,634	--
Excess of Revenues Over/(Under) Expenditures	35,712	32,497	32,497	--
Fund Balances, July 1, 2017	--	19,994	19,994	--
Fund Balances, June 30, 2018	\$ 35,712	\$ 52,491	\$ 52,491	\$ --

Note to Schedule:

An annual Budget is adopted on the modified accrual basis of accounting, consistent with generally accepted accounting principles. Amendments to the budget can only be made with the approval of the Board of Directors. The fund is the legal level of control.

Kattell and Company, P.L.

A Certified Public Accounting Firm Serving the Nonprofit Community

808-B NW 16th Avenue Gainesville, Florida 32601 TEL: 352-395-6565 FAX: 352-395-6636 www.kattell.com

COMMUNICATION WITH THOSE CHARGED WITH GOVERNANCE

September 18, 2018

To the Board of Directors
Resilience Charter School, Inc.

We have audited the special purpose financial statements of Resilience Charter School (the School), for the year ended June 30, 2018, and have issued our report thereon dated September 18, 2018. Professional standards require that we provide you with information about our responsibilities under generally accepted auditing standards, as well as certain information related to the planned scope and timing of our audit. We have communicated such information in our engagement letter to you dated July 10, 2018. Professional standards also require that we communicate to you the following information related to our audit.

Qualitative Aspects of Accounting Practices

Accounting Policies. Management is responsible for the selection and use of appropriate accounting policies. The significant accounting policies used by the School are described in the notes to the financial statements. No new accounting policies were adopted and the application of existing policies was not changed during the year. We noted no transactions entered into by the School during the year for which there is a lack of authoritative guidance or consensus. All significant transactions have been recognized in the financial statements in the proper period.

Accounting Estimates. Accounting estimates are an integral part of the financial statements prepared by management and are based on management's knowledge and experience about past and current events and assumptions about future events. Certain accounting estimates are particularly sensitive because of their significance to the financial statements and because of the possibility that future events affecting them may differ significantly from those expected. There are no estimates that are particularly sensitive.

Disclosures. There are no disclosures that are particularly sensitive.

Corrected and Uncorrected Misstatements. Professional standards require us to accumulate all known and likely misstatements identified during the audit, other than those that are trivial, and communicate them to the appropriate level of management. We have communicated all known and likely adjustments to management and all adjustments have been reflected in the financial statements.

Our Working Relationship with Management

Difficulties Encountered in Performing the Audit. We encountered no difficulties in dealing with management in performing and completing our audit.

Disagreements with Management. For purposes of this letter, professional standards define a disagreement with management as a financial accounting, reporting, or auditing matter, whether or not resolved to our satisfaction, that could be significant to the financial statements or the auditor's report. We are pleased to report that no such disagreements arose during the course of our audit.

Management Representations. We have requested certain representations from management that are included in the management representation letter.

Management Consultations with Other Independent Accountants. In some cases, management may decide to consult with other accountants about auditing and accounting matters, similar to obtaining a "second opinion" on certain situations. If a consultation involves application of an accounting principle to the School's financial statements or a determination of the type of auditor's opinion that may be expressed on those statements, our professional standards require the consulting accountant to check with us to determine that the consultant has all the relevant facts. To our knowledge, there were no such consultations with other accountants.

Consultations Prior to Engagement. We generally discuss a variety of matters, including the application of accounting principles and auditing standards, with management each year prior to retention as the School's auditors. However, these discussions occurred in the normal course of our professional relationship and our responses were not a condition to our retention.

* * * * *

This letter is intended solely for the information and use of management and the Board of Directors of the School and is not intended to be and should not be used by anyone other than these specified parties.

Very truly yours,

Kattell and Company, P.L.

Gainesville, Florida

Kattell and Company, P.L.

Certified Public Accountants Serving the Nonprofit Community

808-B NW 16th Avenue Gainesville, Florida 32601 TEL: 352-395-6565 FAX: 352-395-6636 www.kattell.com

MANAGEMENT LETTER

To the Board of Directors,
Resilience Charter School, Inc.

September 18, 2018

Report on the Financial Statements. We have audited the financial statements of Resilience Charter School, Inc. (the School), as of and for the fiscal year ended June 30, 2018, and have issued our report thereon dated September 18, 2018.

Auditors' Responsibility. We conducted our audit in accordance with auditing standards generally accepted in the United States of America; the standards applicable to financial audits contained in *Government Auditing Standards*, issued by the Comptroller General of the United States; and Chapter 10.850, Rules of the Auditor General.

Other Reports and Schedules. We have issued our Independent Auditors' Report on Internal Control over Financial Reporting and on Compliance and Other Matters Required by *Government Auditing Standards*, and Schedule of Findings. Disclosures in that report and schedule, which are dated September 18, 2018, should be considered in conjunction with this management letter.

Prior Audit Findings. Section 10.854(1)(e)1., Rules of the Auditor General, requires that we determine whether or not corrective actions have been taken to address findings and recommendations made in the preceding annual financial audit report. In that regard, Finding 2018-002 is similar to Finding 2017-004 in the prior year.

Official Title. Section 10.854(1)(e)5, Rules of the Auditor General, requires the name or official title of the entity. The official title of the entity is Resilience Charter School, Inc.

Financial Condition.

Sections 10.854(1)(e)2., Rules of the Auditor General requires that we report the results of our determination as to whether or not the School has met one or more of the conditions described in Section 218.503(1), Florida Statutes, and identification of the specific condition(s) met. In connection with our audit, we determined that the School did not meet any of the conditions described in Section 218.503(1), Florida Statutes.

Pursuant to Sections 10.854(1)(e)6.a. and 10.855(12), Rules of the Auditor General, we applied financial condition assessment procedures for the School. It is management's responsibility to monitor the School's financial condition, and our financial condition assessment was based in part on representations made by management and the review of financial information provided by same.

Transparency. Sections 10.854(1)(e)7. and 10.855(13), Rules of the Auditor General, require that we report the results of our determination as to whether the School maintains on its website the information specified in Section 1002.33(9)(p), Florida Statutes. In connection with our audit, we determined that the School is not in compliance with the Statutes because some of the required information is not available on the website. Refer to Finding 2018-002 in the accompanying Schedule of Findings.

Other Matters.

Section 10.854(1)(e)3, Rules of the Auditor General, requires that we address in the management letter any recommendations to improve financial management. In connection with our audit, we did not have any such recommendations.

Section 10.854(1)(e)4, Rules of the Auditor General, requires that we address noncompliance with provisions of contracts or grant agreements, or abuse, that have occurred, or are likely to have occurred, that have an effect on the financial statements that is less than material but which warrants the attention of those charged with governance. Refer to Finding 2018-001 in the accompanying Schedule of Findings.

Purpose of this Letter. Our management letter is intended solely for the information and use of the Legislative Auditing Committee, members of the Florida Senate and the Florida House of Representatives, the Florida Auditor General, the local district school board, the Board of Directors and management of the School, and is not intended to be and should not be used by anyone other than these specified parties.

Thank you for the cooperation and courtesies extended to us during the course of the audit. Please let us know if you have any questions or comments concerning this letter, our accompanying reports, or any other matters.

Kattell and Company, P.L.

Kattell and Company, P.L.

Certified Public Accountants Serving the Nonprofit Community

808-B NW 16th Avenue Gainesville, Florida 32601 TEL: 352-395-6565 FAX: 352-395-6636 www.kattell.com

INDEPENDENT AUDITORS' REPORT ON INTERNAL CONTROL OVER FINANCIAL REPORTING AND ON COMPLIANCE AND OTHER MATTERS REQUIRED BY GOVERNMENT AUDITING STANDARDS

Board of Directors of
Resilience Charter School, Inc.

We have audited, in accordance with auditing standards generally accepted in the United States of America and the standards applicable to financial audits contained in *Government Auditing Standards*, issued by the Comptroller General of the United States, the financial statements of the governmental activities and each major fund of Resilience Charter School, Inc. (the School), as of and for the year ended June 30, 2018, and the related notes to financial statements, which collectively comprise the School's basic financial statements, and have issued our report thereon dated September 18, 2018.

Internal Control Over Financial Reporting

In planning and performing our audit of the financial statements, we considered the School's internal control over financial reporting (internal control) to determine the audit procedures that are appropriate in the circumstances for the purpose of expressing our opinions on the financial statements but not for the purpose of expressing an opinion on the effectiveness of the School's internal control. Accordingly, we do not express an opinion on the effectiveness of the School's internal control.

A deficiency in internal control exists when the design or operation of a control does not allow management or employees, in the normal course of performing their assigned functions, to prevent, or detect and correct misstatements on a timely basis. A material weakness is a deficiency, or combination of deficiencies, in internal control, such that there is a reasonable possibility that a material misstatement of the School's financial statements will not be prevented, or detected and corrected on a timely basis. A significant deficiency is a deficiency, or a combination of deficiencies, in internal control that is less severe than a material weakness, yet important enough to merit attention by those charged with governance.

Our consideration of internal control was for the limited purpose described in the first paragraph of this section and was not designed to identify all deficiencies in internal control that might be material weaknesses or significant deficiencies and therefore, material weaknesses or significant deficiencies may exist that were not identified. Given these limitations, during our audit we did not identify any deficiencies in internal control that we consider to be material weaknesses.

Compliance and Other Matters

As part of obtaining reasonable assurance about whether the School's financial statements are free of material misstatement, we performed tests of its compliance with certain provisions of laws, regulations, contracts and grants, noncompliance with which could have a direct and material effect on the determination of financial statement amounts. However, providing an opinion on compliance with those provisions was not an objective of our audit and, accordingly, we do not express such an opinion. The results of our tests disclosed no instances of noncompliance or other matters that are required to be reported under *Government Auditing Standards*.

School's Response to Finding

The School's response to the finding identified in our audit is described in the accompanying letter from the School. The School's response was not subjected to auditing procedures applied in the audit of the financial statements and, accordingly, we express no opinion on it.

Purpose of this Report

The purpose of this report is solely to describe the scope of our testing of internal control and compliance and the results of that testing, and not to provide an opinion on the effectiveness of the School's internal control or on compliance. This report is an integral part of an audit performed in accordance with *Government Auditing Standards* in considering the School's internal control and compliance. Accordingly, this communication is not suitable for any other purpose.

* * * * *

As required by the Rules of the Auditor General of the State of Florida, we noted certain matters that we reported to management of the School in the management letter dated September 18, 2018.

Kattell and Company, P.L.
September 18, 2018

Schedule of Findings
June 30, 2018
Resilience Charter School, Inc.
A Component Unit of the Alachua County District School Board

Immaterial Noncompliance

2018-001 Public Deposits

Finding - The School did not comply with Chapter 280, Florida Statutes, when placing public funds on deposit in a bank.

Recommendation - The School should contact their bank and take the steps necessary to insure that the funds are placed in public funds.

Transparency

2018-002 Information on School Website

Finding - According to Florida Statutes, the School is to maintain a website that enables the public to obtain information regarding the School as detailed in Sections 1002.33(9)(p). Although the School does have a website, the School grade was not posted on the website on August 1, 2018, the day we performed our procedures.

Recommendation - The School should maintain a website in compliance with Florida Statutes with all of the required information.



ResilienceCharter.org

1717-A NE 9th Street, Gainesville FL 32609
352-226-8675 - info@ResilienceCharter.org

September 18, 2018

Steve Kattell
Kattell & Company, P.L.
808-B NW 16th Avenue
Gainesville, FL 32601

Dear Mr. Kattell,

We have reviewed your Independent Auditors' Report for our 2017-18 school year, and have noted your findings on page 21.

We understand all items as reported and will take necessary steps to correct all findings as described below:

2018-001 Public Deposits – Lisa Labbe and I, the two authorized signers on the Resilience bank account, have co-signed a letter authorizing the change of our business bank account to a public depository, and we have an appointment with a bank manager at 10 am on September 19, 2018 to complete this account change.

2018-002 – Information on School Website – this was an oversight that took place when the school grades came out in late June, and we were in the process of removing our old school grade and posting the new one, while also working on a brand new website. The 2017-18 school grade is now posted on our current website and is also posted on our new website that will be rolling out in late September 2018 (both will be accessible at www.resiliencecharter.org).

Sincerely,

Jenny Hill
Director

jhill@resiliencecharter.org